

Unitype

Global Writer™

Tips to Get You Started

Installing Global Writer

We advise that you close all Windows applications prior to running the Global Writer installation.

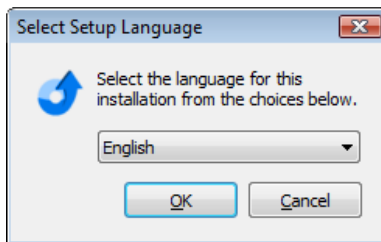
If you currently have Gamma UniType installed on your system, you will need to remove it before installing Global Writer. For information on removing Gamma UniType, please see *ungamma.txt* or *ungamma.htm* on your CD.

To begin Global Writer installation, insert the CD into your computer CD-ROM drive. The Setup program should start automatically. (*On Windows 7 or Vista select **Allow** or **Continue** if you receive a User Account Control message.*)

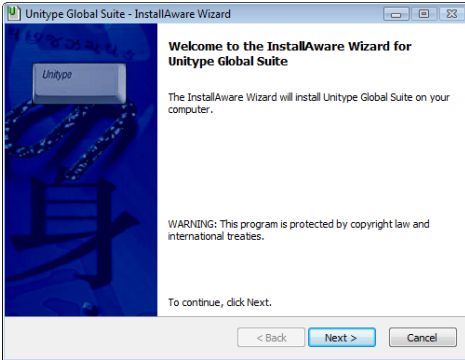
If Setup does not start automatically, follow these steps:

1. Click the **Start** button.
2. Choose the **Run** option.
3. Type **d:\setup** in the **Open** box, and click **OK**. (Note: "d" represents the CD-ROM drive letter, if your computer uses a different letter, replace "d" with that letter.)
4. Continue to follow the prompts.

Once Setup has started, the first step is to choose the user interface language for both the installation procedure and for the Global Writer program. It is possible to install Global Writer to use an English, French, German or Japanese user interface. Make a language choice by clicking on the drop-down list and selecting a language name, then click **OK**.

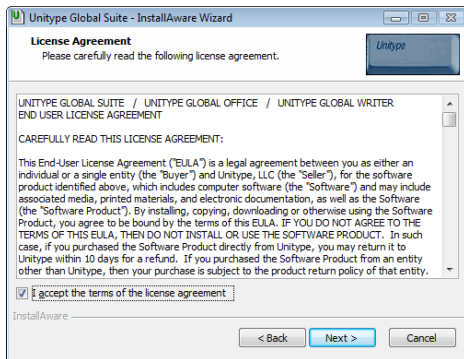


Note: Setup will automatically install phonetic keyboard layouts for some languages. The phonetic layouts installed correspond to standard keyboards of US/UK, France, Germany or Japan which is determined by your language version of Windows. Please see the Unitype ReadMe file if you would like to override the default selection for your system.

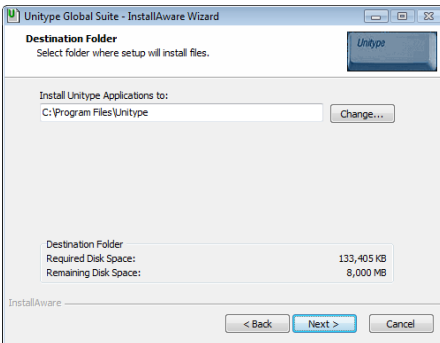


After selecting the user interface language the **Welcome** dialog box (and all other dialog boxes) will appear in the language selected.

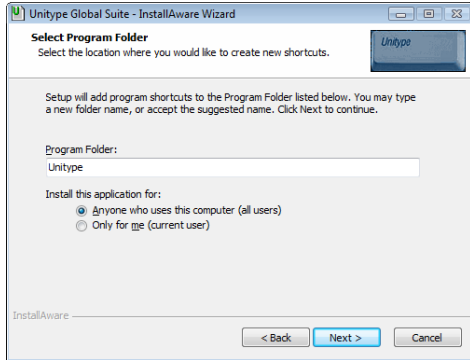
After the Welcome dialog box, you must accept the **License Agreement** in order to install Global Writer. To accept the agreement, checkmark the statement and select **Next** to continue.



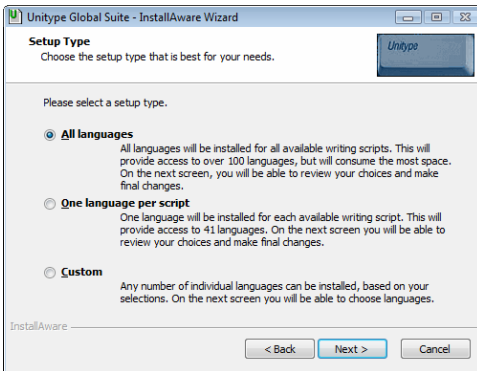
The next step is to specify the program installation directory. In the **Destination Folder** dialog click **Next** to accept the default location, or click **Change** to choose a custom location.



In the **Select Program Folder** specify the folder name for the Start menu program icons. Accept the default name Unitytype, or type a different name in the edit window.



The next two steps involve choosing the specific Global Writer languages that you want to install.



1. Select a setup type in the **Setup Type** dialog box. There are three options:

- **All languages** will select all Global Writer languages to be installed. This is convenient for installing all or most languages.
- **One language per script** will automatically

select one language per script which will install all script support while minimizing installation overhead.

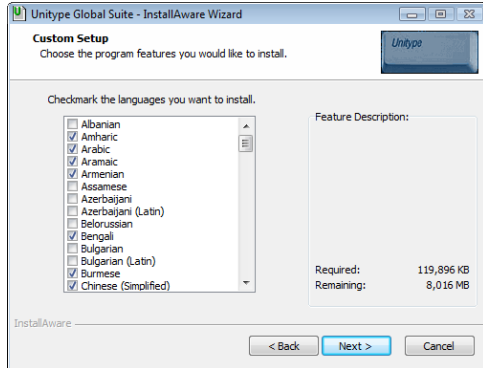
- **Custom** will allow you to manually select individual languages from a blank install sheet. If you only need to install a few languages, choose this setup type.

Click **Next** once you've chosen a Setup Type.

2. In the next dialog box confirm the languages selected to be installed, or make changes.

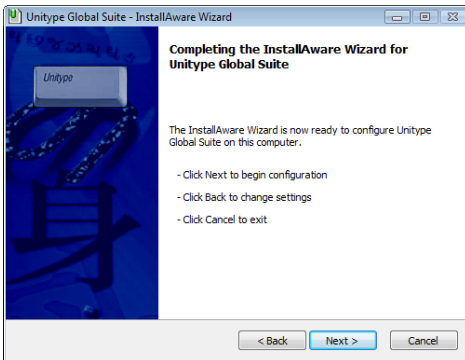
All language names that have a checkmark will be installed. Click on checkboxes to add or remove checkmarks. Scroll down to see the complete list of languages.

If, for any reason, you would like to clear your choices and restart the language selection process, click the **Back** button.



Note: *English will be automatically installed regardless of language selection; however, to include the English spell check dictionary, English must be selected.*

Click **Next** once you are done selecting languages to install.



Click **Next** one more time in the next dialog box to begin the installation. The installation may take several minutes. Once complete you will be prompted to reboot your system. Reboot to insure all components are properly installed.

Global Writer Additional Information

For answers to questions and information about Global Writer languages, features, and menu items, please read the electronic **Global Writer Help**. You can launch Help from either the **Global Writer Help** menu or the Windows **Start** menu.

Remember to register your product to receive all the latest information from Unitype.

Unitype Support Resources

Address: **Unitype, LLC
116-A Mockingbird Lane
Lockhart, TX 78644
USA**

Telephone: **1-512-620-0384**

Fax: **1-512-233-0094**

Technical Support: **support@unitype.com**

Customer Support: **sales@unitype.com**

Website: **www.unitype.com**